



Minoru Yamasaki, The architect of the World Trade Center.



The Port Authority chose the current site for the World Trade Center.

20/09/1962

The Port Authority of New York and New Jersey began obtaining property at the World Trade Center site.
01/03/1965

Demolition at the site began with the clearance of thirteen square blocks of low rise buildings for construction of the World Trade Center.
01/01/1966

Construction of the north tower began.
01/08/1968

1960

Minoru Yamasaki was selected to design the project. He was a second generation Japanese-American who studied architecture at the University of Washington and New York University. He considered hundreds of different building configurations before deciding on the twin towers design. The Port Authority unveiled the \$525 million World Trade Center plan to the public. It was a composite of six buildings comprised of 10 million square feet of office space. At its core were the Twin Towers, which at 110 stories (1,368 and 1,362 feet) each would be the world's tallest skyscrapers.

Yamasaki's design for the World Trade Center was unveiled to the public. The design consisted of a square plan approximately 207 feet in dimension on each side. The buildings were designed with narrow office windows 18 inches wide, due to Yamasaki's fear of heights and his desire to make building tenants feel secure. The building facades were covered in aluminum-alloy.

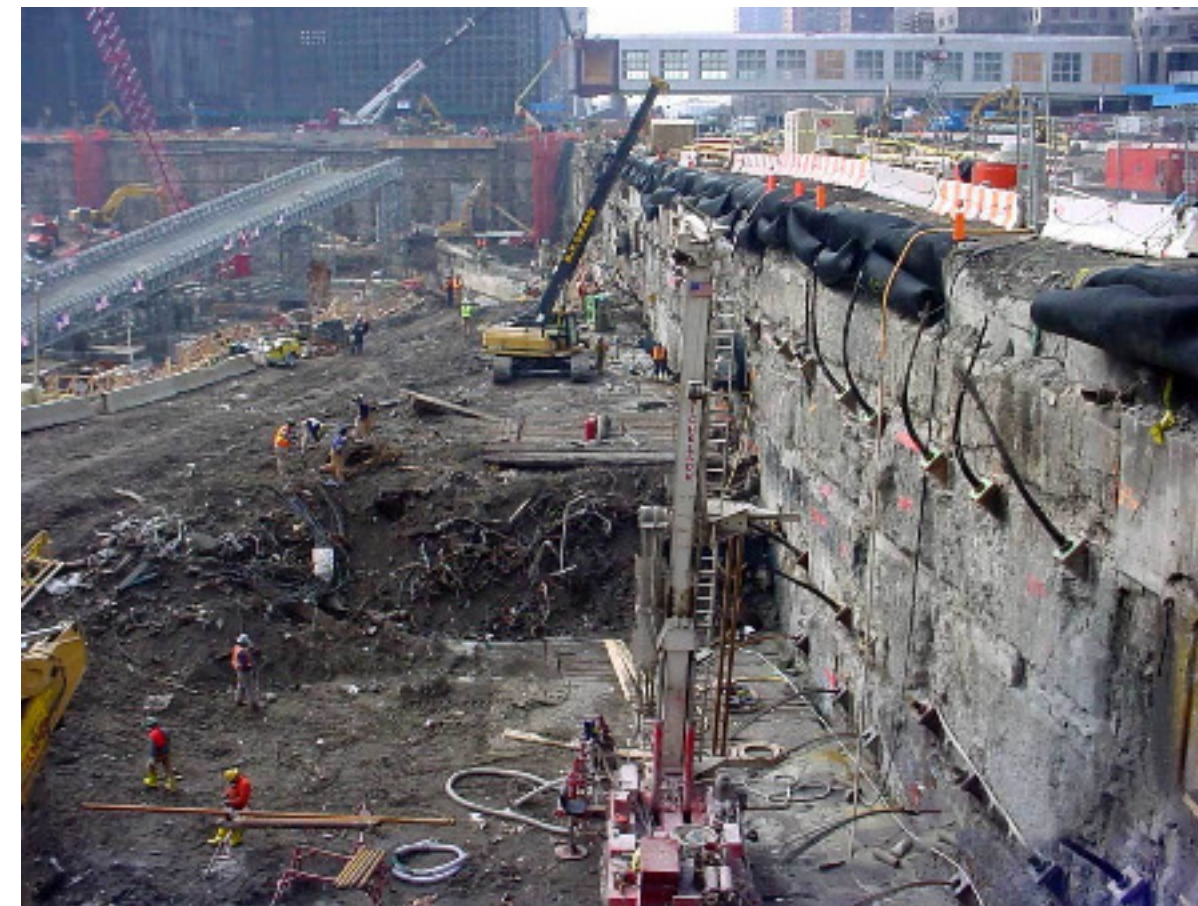
19/01/1964

Groundbreaking for the construction began on August 5, 1966. Site preparations were vast and included an elaborate method of foundation work for which a "bathtub" had to be built 65 feet below grade. The bathtub was made of a bentonite (absorbent clay) slurry wall intended to keep out groundwater and the Hudson River.

Construction of the south tower began.
01/01/1969



Minoru Yamasaki in front of his model for the World trade Center.

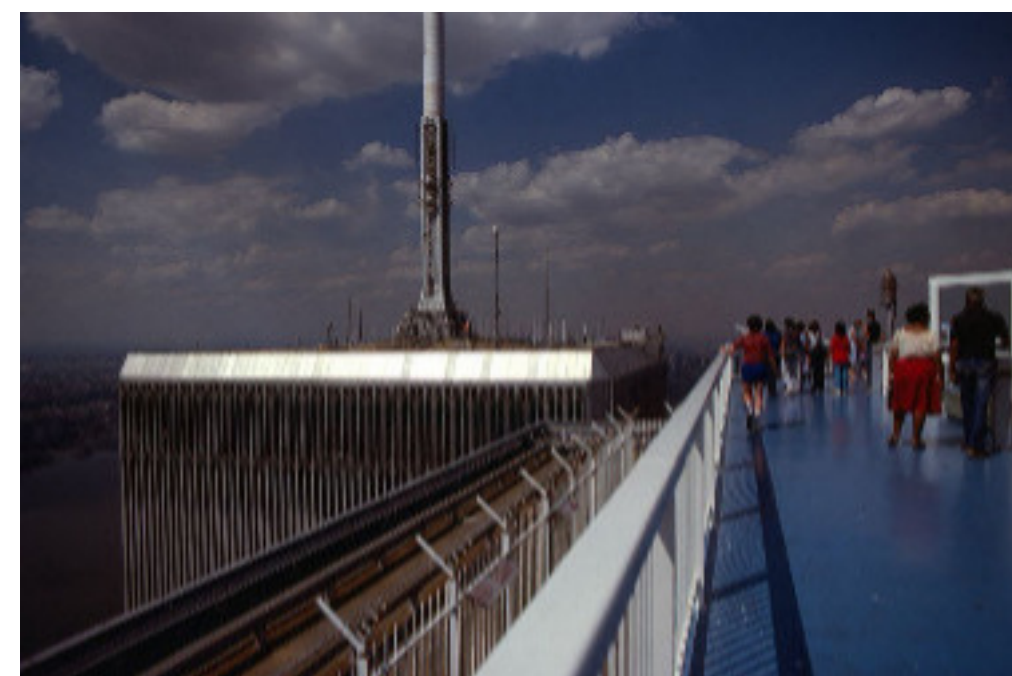


The "bathtub" built for the fondation. It had to keet out water.

The topping out ceremony of the north tower took place.
23/12/1970

The twin towers debut as the tallest buildings in the world -at 1,368 and 1,362 feet and 110 stories each--surpassing the height of the Empire State Building until the Sears Tower in Chicago, providing 10 million sq ft of office space was built. In addition to the twin towers, four smaller buildings and a hotel, all built nearby around a central landscaped plaza, completed the complex. The mall at the World Trade Center, which was located immediately below the plaza, was the largest shopping mall in lower Manhattan. The six basements housed two subway stations and a stop on the PATH trains to New Jersey. Some 50,000 people worked in the buildings, while another 200,000 visited or passed through each day.

04/04/1973



Top of the World Observation Deck on the South Tower.

1970

The topping out ceremony of the south tower at 1,362 feet occurred.
19/07/1971



The Twin Towers in 1970.



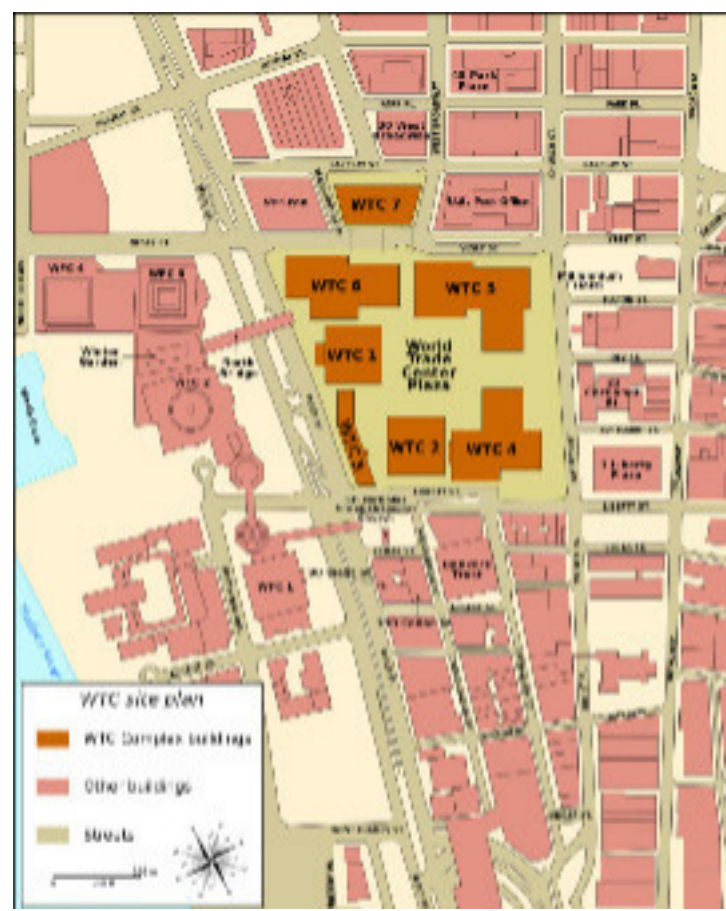
The Top of the World Observation Deck opens at Two World Trade Center (South Tower) on the 107th floor providing breathtaking views of Manhattan. On a clear day, visitors could see up to 50 miles in any direction.

01/12/1975



The world-famous restaurant, Windows on the World, opened on the top floors (106th and 107th) of the north tower. Developed by Joe Baum and initially designed by Warren Platner, it occupied 50,000 square feet of space and offered breathtaking views of Manhattan. In its last year of operation (2000), Windows on the World reported its revenue as \$37 million, making it the highest-grossing restaurant in the United States.

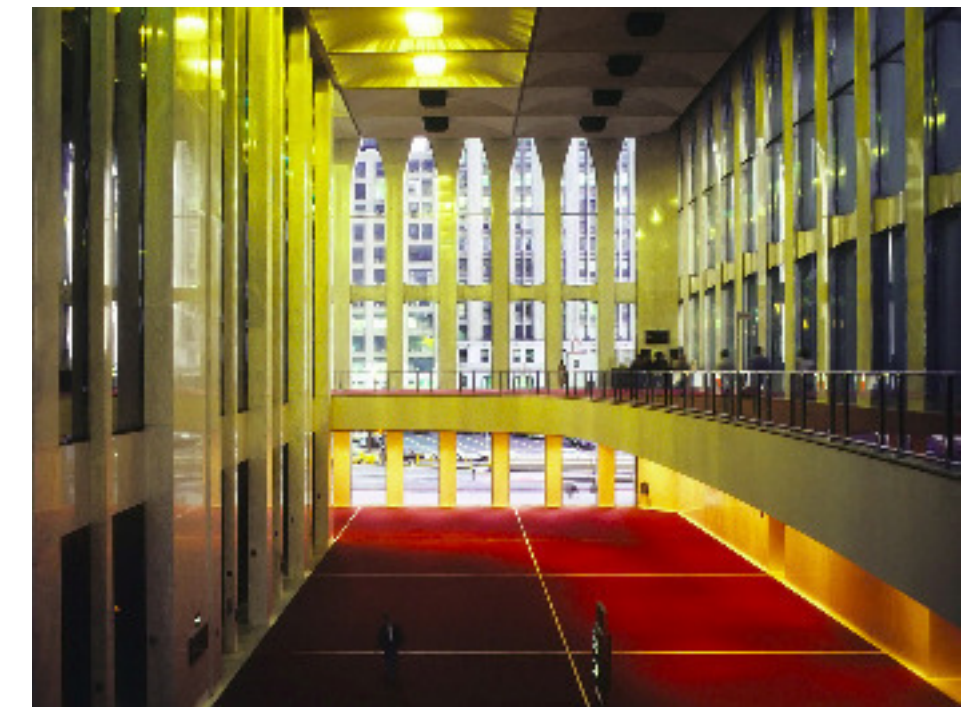
01/01/1976



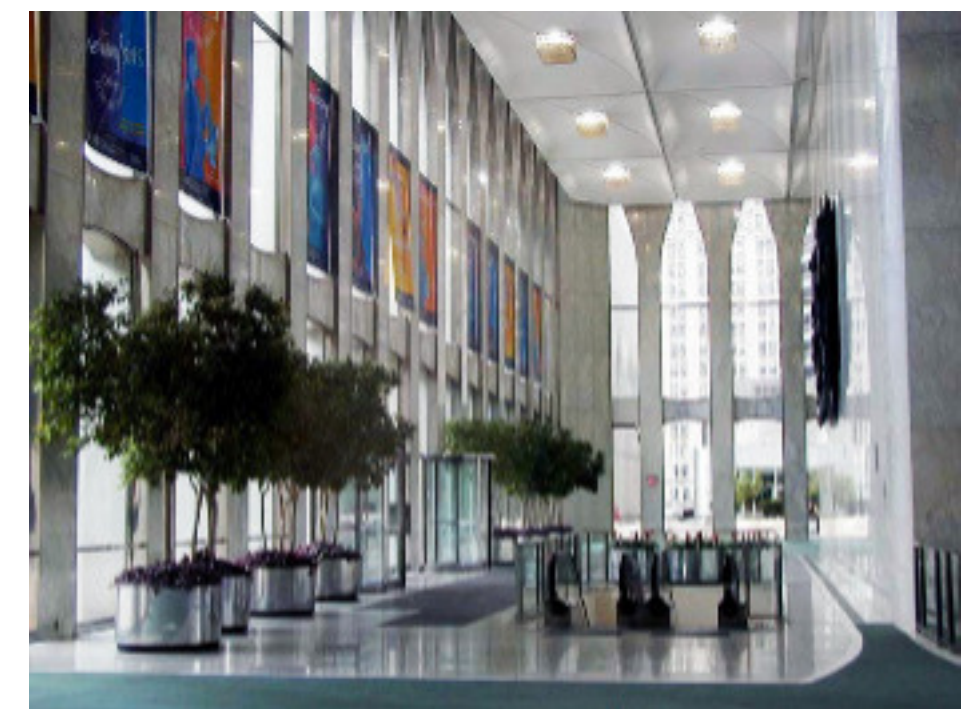
Map of the World Trade Center



Manhattan during the 70's.



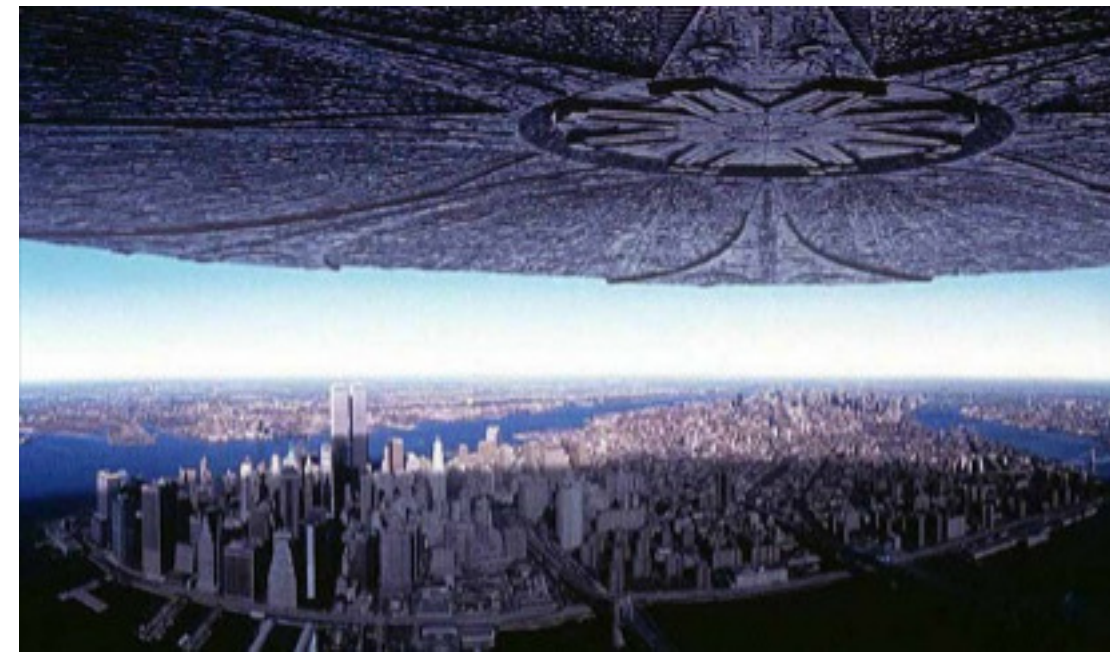
Inside the Towers 1/2



Inside the Towers 2/2



The Twin Towers on screen: Die Hard (1995)



The Twin Tower on screen: Independence Day (1996)



The Twin Towers on Screen: Deep Impact (1998)

A van loaded with 1,500 pounds of explosives was planted by a group of terrorists in an underground parking garage of the north tower. Their goal was to knock the north tower into the south tower, bringing both towers down and killing thousands of people. The attack killed six people, including a pregnant woman, injured more than 1,000 people and created a five-story hole beneath the towers, resulting in hundreds of millions of dollars of damage.

26/02/1993



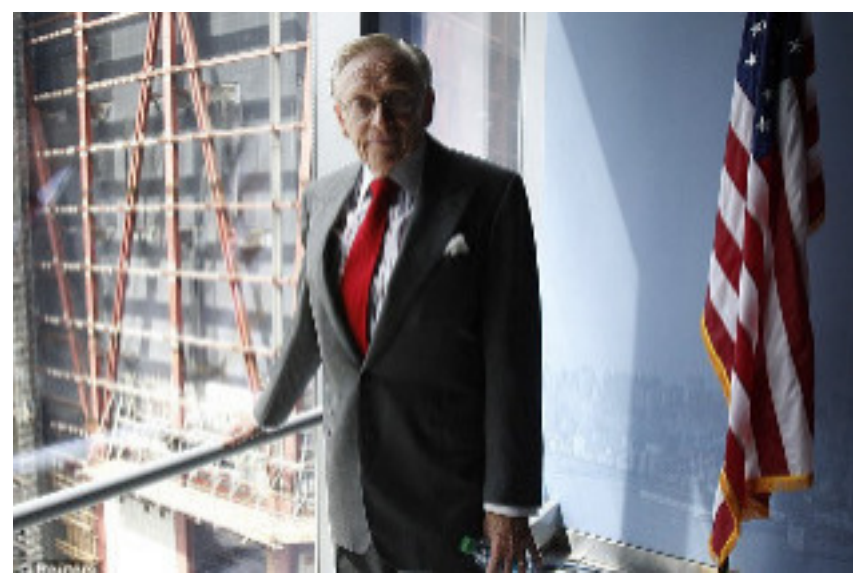
The North Tower underground parking garage after the attack of 1993.



The Twin towers on screen: Men In Black (1997)

Larry Silverstein completed the largest real estate transaction in New York history by acquiring the World Trade Center for \$3.2 billion, only to see it destroyed six weeks later in the terrorist attacks on 9/11. Previously, the World Trade Center site was under the control of the Port Authority of New York & New Jersey.

24/07/2001



Larry Silverstein, the owner of the World Trade Center.



Groundbreaking for the One World Trade Center.

The WTC recovery operation came to a ceremonial end, marking the completion of the removal of more than 1 million tons of concrete and steel.

30/05/2002

Ground was broken for construction of 1 World Trade Center, the symbolic skyscraper designed to replace the destroyed World Trade Center. The tower will pay homage to the original twin towers, and will rise to 1,776 feet with its illuminated antenna.

27/04/2006

2010

The World Trade Center was destroyed in the September 11th terrorist attacks. Two commercial jet planes struck the Twin Towers, causing their collapse and the destruction of four other WTC buildings. The attack killed 2,750 people at the Trade Center, many of them were policemen and firemen. The collapse of 7 WTC, which had already been evacuated, followed at 5:20 p.m. that day due to a fire in the building. Soon after the attacks, Larry Silverstein announced his intent to rebuild.

11/09/2001

Workers began to remove remaining debris and started surveying work at the World Trade Center. This marked the start of construction on the National September 11 Memorial & Museum.

13/03/2006



The ruins of the World Trade Center seen from above.



The terrorist attacks of September 11th.

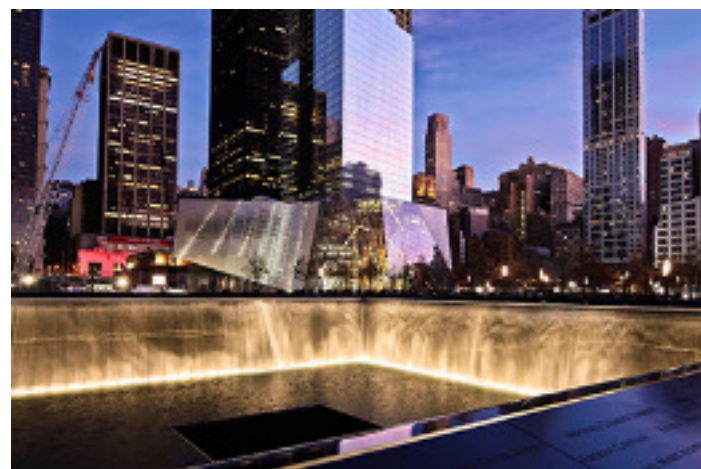


First time every part of the site is under construction. Foundation work began for World Trade Center. First time every part of the site is under construction.



The US special forces killed Osama Bin Laden. He was the founder of al-Qaeda, the organization that was responsible for the September 11 attacks on the United States, along with numerous other mass-casualty attacks worldwide.

02/05/2011

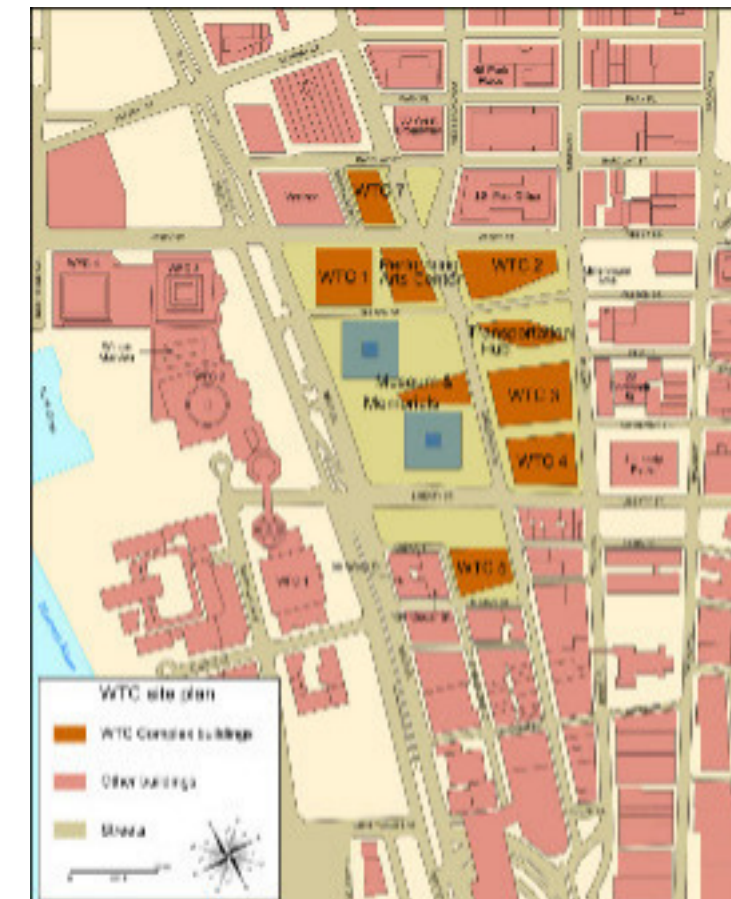


9/11 memorial illuminated for the first time.



World Trade Center's one-acre Liberty Park opened to the public.

29/06/2016



Map of the new World Trade Center.

Memorial Plaza Waterfall lights were illuminated for the first time. The 9/11 Memorial Plaza opened on September 11, 2011, exactly ten years after the World Trade Center attacks. On August 15, 2011, the lights that illuminate the waterfalls were turned on for the first time.

15/08/2011



er construction.
ade Center Towers 2 and 3 marking the first
struction.

01/07/2010



One World Trade Center officially opened.

03/11/2014



Project of the New World Trade Center.